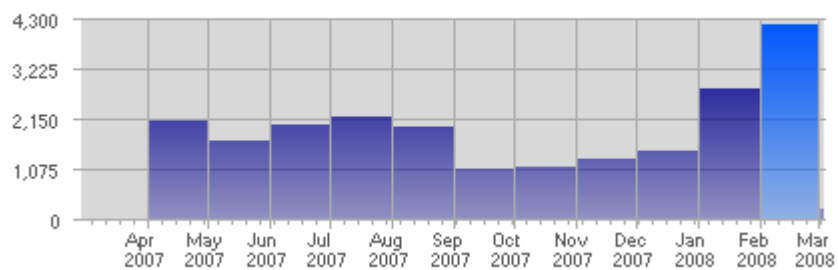


Traffic and Activity > Page Views

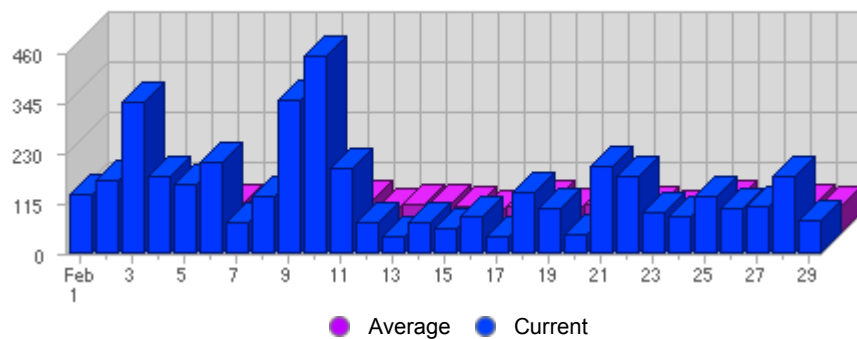
Report Description

Report Description: Page Views during the month of February 2008  
 Report Range: Month of February 2008  
 Report Scope: Historical Data

Historic Breakdown



Activity Breakdown



| Date               | Total Page Views | Average Page Views Historically | Change | Percent of Total Page Views |
|--------------------|------------------|---------------------------------|--------|-----------------------------|
| Fri Feb 1st, 2008  | 134              | 60,18                           | +134 ▲ | 3,19%                       |
| Sat Feb 2nd, 2008  | 167              | 53,94                           | +167 ▲ | 3,97%                       |
| Sun Feb 3rd, 2008  | 348              | 61,29                           | +191 ▲ | 8,27%                       |
| Mon Feb 4th, 2008  | 175              | 77,79                           | -2 ▼   | 4,16%                       |
| Tue Feb 5th, 2008  | 160              | 57,44                           | +137 ▲ | 3,80%                       |
| Wed Feb 6th, 2008  | 208              | 64,49                           | +153 ▲ | 4,95%                       |
| Thu Feb 7th, 2008  | 72               | 68,43                           | -90 ▼  | 1,71%                       |
| Fri Feb 8th, 2008  | 132              | 60,18                           | -2 ▼   | 3,14%                       |
| Sat Feb 9th, 2008  | 353              | 53,94                           | +186 ▲ | 8,39%                       |
| Sun Feb 10th, 2008 | 453              | 61,29                           | +105 ▲ | 10,77%                      |
| Mon Feb 11th, 2008 | 196              | 77,79                           | +21 ▲  | 4,66%                       |
| Tue Feb 12th, 2008 | 72               | 57,44                           | -88 ▼  | 1,71%                       |
| Wed Feb 13th, 2008 | 39               | 64,49                           | -169 ▼ | 0,93%                       |
| Thu Feb 14th, 2008 | 71               | 68,43                           | -1 ▼   | 1,69%                       |
| Fri Feb 15th, 2008 | 59               | 60,18                           | -73 ▼  | 1,40%                       |
| Sat Feb 16th, 2008 | 87               | 53,94                           | -266 ▼ | 2,07%                       |
| Sun Feb 17th, 2008 | 38               | 61,29                           | -415 ▼ | 0,90%                       |
| Mon Feb 18th, 2008 | 140              | 77,79                           | -56 ▼  | 3,33%                       |
| Tue Feb 19th, 2008 | 104              | 57,44                           | +32 ▲  | 2,47%                       |
| Wed Feb 20th, 2008 | 45               | 64,49                           | +6 ▲   | 1,07%                       |
| Thu Feb 21st, 2008 | 198              | 68,43                           | +127 ▲ | 4,71%                       |
| Fri Feb 22nd, 2008 | 177              | 60,18                           | +118 ▲ | 4,21%                       |
| Sat Feb 23rd, 2008 | 95               | 53,94                           | +8 ▲   | 2,26%                       |
| Sun Feb 24th, 2008 | 83               | 61,29                           | +45 ▲  | 1,97%                       |
| Mon Feb 25th, 2008 | 133              | 77,79                           | -7 ▼   | 3,16%                       |
| Tue Feb 26th, 2008 | 105              | 57,44                           | +1 ▲   | 2,50%                       |
| Wed Feb 27th, 2008 | 110              | 64,49                           | +65 ▲  | 2,62%                       |
| Thu Feb 28th, 2008 | 176              | 68,43                           | -22 ▼  | 4,19%                       |

|                    |       |       |          |       |
|--------------------|-------|-------|----------|-------|
| Fri Feb 29th, 2008 | 76    | 60,18 | -101 ▼   | 1,81% |
|                    | 4,206 | 1,809 | +1,402 ▲ |       |

Content created Monday, March 3, 2008 10:04:37 GMT 1:00  
LiveStats® .XSP V8.03 Copyright ©1996-2005 DeepMetrix® Corporation. All rights reserved.  
Licensed to Aruba S.p.A..